

# Project KSL City Development, *Johor Bahru*

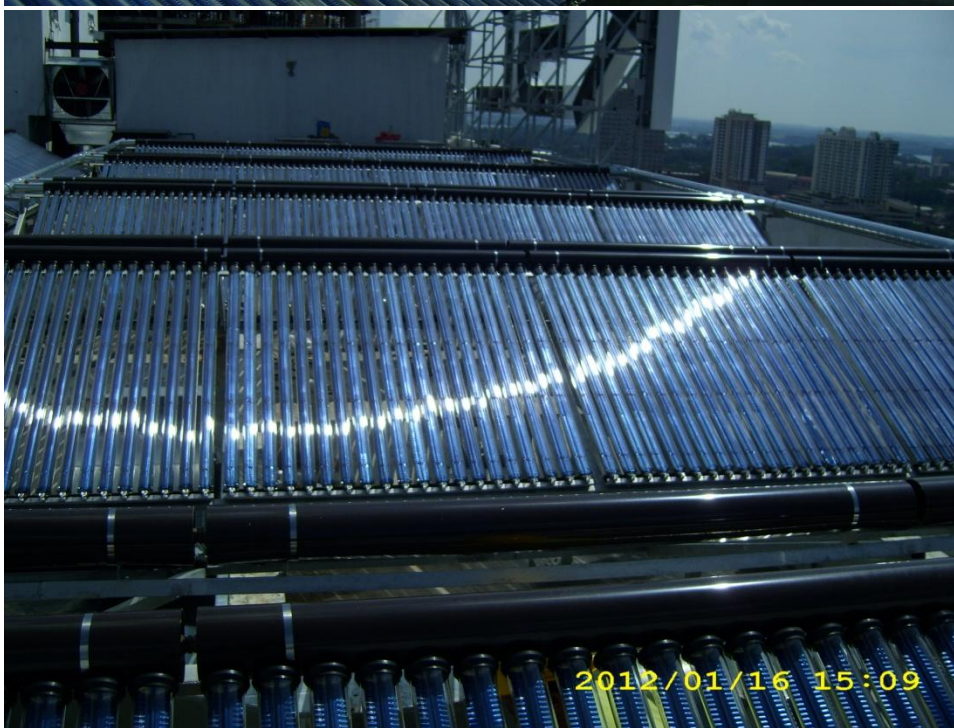


## **PROJECT OVERVIEW**

KSL City Mall and Hotel is the newest integrated resort in Johor Bahru that offers a complete shopping experience with entertainments and accommodations. KSL City consists of two Hotel towers with 400 rooms per tower. Each tower is equipped with M&E services and Centralized Solar Hot Water System.

## Green and features

The mall and hotel are fitted with Solar Thermal (Hot Water) System and Building Automation System (BAS).



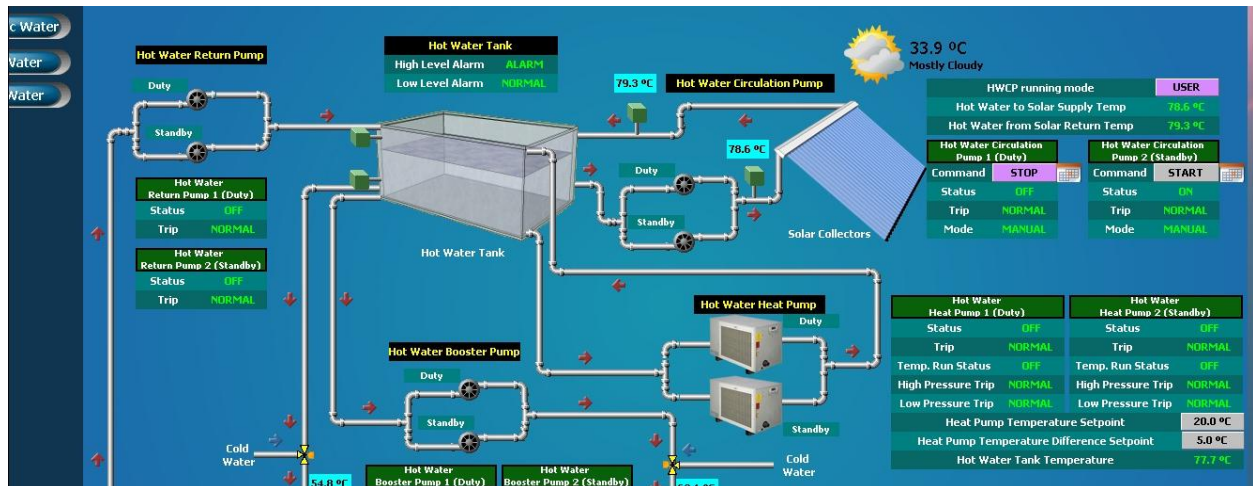
Evacuated Tube Solar collectors are installed on top of the hotel's roof

## Building Automation System (BAS)



**Home Page of KSL'S Building Automation System**





- All the required information is shown in this page
- The information included alarms, equipment's status and all the sensor readings.
- User can control the operation of the pumps in this page
- User can also perform others equipment's control like heat control or scheduling in this page.

