

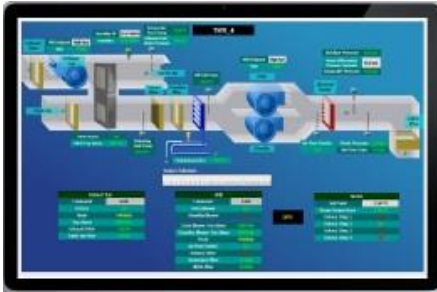
Tri-IO



Tri-IO SoftJACE Controller

Overview

New levels of flexibility available from the leading provider of open, Internet-enabled, automation infrastructure solutions.



The Tri-IO AX SoftJACE makes it easy to address unique application needs such as rack mounting, extended temperature ranges, industrial packaging Windows environment.

No need to install and manage “thick client” software applications to give your end users access to the critical real time information.

Now you can take advantage of the real-time control, dynamic graphics, and multi-protocol integration capabilities of Tridium’s Niagara Framework® on the hardware of your choice. The AX SoftJACE makes it easy to address unique application needs such as rack mounting, extended temperature ranges, industrial packaging Windows environment. The SoftJACE provides all of the capabilities of a programmable controller, multi-protocol adapter, network manager, web server (with optional Web User Interface), data logger and alarm system in a single software solution.

You can run the AX SoftJACE on most Microsoft XP Professional®, Windows Server 2003 and other Windows compatible computers (except Vista). The AX SoftJACE communicates with external devices utilizing Ethernet-based protocols, and currently supports the industry’s most common standard protocols: OPC®, BACnet® IP, Modbus® TCP, oBIX and SNMP. The oBIX driver (client/server) is included with the SoftJACE license, other drivers are sold separately.

The AX SoftJACE is available in a variety of capacities priced to meet a wide range of application needs. Capacity is measured based on AX resource units used by a Niagara station which is an indicator of the amount of points, devices, logs and graphics that you utilize when building an application. Two AX SoftJACE configurations are available as described later in this data sheet.

Feature

- Meet the needs of special applications – choose from the wide range of hardware platforms that support Windows XP Professional, Windows Server 2003, Windows 7, Windows 8 and Windows 10.
- Supports the most widely used system protocols over Ethernet: OPC, BACnet IP, Modbus TCP, SNMP, (oBIX Client/Server included; others sold separately).
- Supports optional Web User Interface – Serves dynamic, animated graphic displays directly to a standard web browser. No need for additional hardware or web servers.
- No need to install and manage “thick client” software applications to give your end users access to the critical real time information. Access your system from anywhere with a standard web browser.
- A fully integrated station of a Niagara distributed-architecture system. AX SoftJACE nodes communicate with other AX SoftJACEs, Tri-IO embedded AX JACEs and AX Supervisors on a peer-to-peer basis when configured with the optional Enterprise Connectivity Service Pack (EC-SP-SJ).
- Use AX Supervisor software to aggregate multiple AX SoftJACEs into a unified system with centralized database storage, data logging and archiving, and alarm reporting..

Hardware Specifications

Interactive 7" Touch Screen Panel

- PC platform with Intel Atom CPU – 1 GHz or higher
- 1GB memory or larger
- Hard Disk 32 GB or larger
- Wireless Wifi connectivity
- Platform must be dedicated to the AX SoftJACE application only
- Windows XP Professional, Windows 7, Windows 10, Windows Server 2003, other WIN compatible

Interactive 10" Touch Screen Panel

- PC platform with Intel Atom CPU – 1 GHz or higher
- 2GB memory or larger
- Hard Disk 32 GB or larger
- Wireless Wifi connectivity
- Platform must be dedicated to the AX SoftJACE application only
- Windows XP Professional, Windows 7, Windows 10, Windows Server 2003, other WIN compatible

Controller Box

- PC platform with Intel Atom CPU – 1 GHz or higher
- 2GB memory or larger
- Hard Disk 32 GB or larger
- Wireless Wifi, Ethernet LAN & Bluetooth Connectivity
- 3 or more USB ports
- Windows XP Professional, Windows 7, Windows 10, Windows Server 2003, other WIN compatible

Architecture

